



Wilson Residents and Ratepayers' Association

Website: <http://wrra.org.au>

E-Mail: secretary@wrra.org.au

Send all correspondence to: secretary@wrra.org.au

Summer 2020 Edition

WRRRA represents you in Wilson by working cooperatively with:

- City of Canning
- Canning River Regional Park Community Advisory Committee
- WA Government Depts.
- Neighbourhood Watch Program & WA Police
- State & Federal Government Politicians
- Wilson Wetlands Action Group Inc. and other community groups
- Community Newspapers

UPCOMING EVENTS

WRRRA Committee Meeting
Monday 3 February 2020
@ 7pm
Wilson Community Hall
Braibrise Road, Wilson

Inside this issue:

Editorial	1
WRRRA Constitution	2
Aircraft Noise	2
Kent St Weir Precinct	2
Parking & Traffic Issues	2
Dual use path & Boardwalk	3
Membership Form	4

Editorial

WRRRA CANDIDATES' FORUM

On the 7th October 2019 the WRRRA hosted a forum for Mayoral and Councillor candidates to present why they should be elected as the Mayor or a Councillor of the City of Canning.

The forum was well received. In total, eight Mayoral Candidates accepted the invitation with one being an apology and six Councillor Candidates accepted the invitation with two apologies.

In front of forty Wilson residents the presentations and debate throughout the Forum were both very informative and respectful.

Feedback from residents who were there on the night has been very positive with many taking the time to email the WRRRA to express their appreciation for the event. It is always great to hear from our members.

Congratulations to Patrick Hall, the newly elected Mayor and to Mark Bain, the newly elected councillor for Beeloo Ward. Patrick is a resident of Wilson and Mark has already attended our most recent WRRRA Committee meeting and has shown his interest in supporting the Wilson residents.

WRRRA is financially sound, has a healthy membership of around one hundred members and an active committee. If you are not currently a member of the WRRRA but would like to become a member, please complete the membership form on Page 4 and join our vibrant and pro-active association.

Together the Ratepayers and Residents of Wilson can make a difference!

Ben INDRISIE

The Wilson Residents and Ratepayers' Association (WRRRA) would like to acknowledge and thank the Canning City Council for their continued community support by allowing part proceeds from ice cream vendor sales at the annual New Year's Day concert, held at Shelley foreshore, to be used to fund community awards.

The WRRRA would also like to thank the Member for Victoria Park, the Hon. Ben WYATT MLA and his office staff for their continued support in printing the WRRRA's bi-annual newsletter

WRRRA CONSTITUTION

A new WRRRA constitution came into effect following the 2019 AGM. There was an obligation for all incorporated 'not for profit' bodies in WA to have in place a constitution by 1 July 2019, that mirrored a list of basic criteria the Government had set-out for this purpose.

The main changes relate to a requirement that members of the committee to disclose if they've had a criminal conviction or bankruptcy or similar circumstances, and there now being no requirement for the Association's accounts to be audited. The other main change relates to how the organisation deals with disputes, but generally most of the amendments were of a minor nature.

The new constitution is available to view on the Association's website. For any queries please send an email to secretary@wrrra.org.au.

Graham Follington

KENT STREET WEIR PRECINCT

In the coming months WRRRA will prepare a Kent Street Weir Precinct discussion paper.

The paper will focus on the area as of benefit for

- Residents
- The Environment
- Passive Recreation Area for people of all ages, focusing on families.

The Paper will reflect issues such

- Improvement to the aesthetics of the approach to the Precinct.
- Focus on environmental features.
- An area of tranquillity for all residents and visitors.
- Traffic Flow and Parking.
- Underground Power.
- Rationalisation of facilities and activities.
- A safe area with strategies to restrict bush fires.

WRRRA endeavours to work closely with the City of Canning and invites comment from residents about the development of the Precinct by emailing secretary@wrrra.org.au.

AIRCRAFT NOISE

The City of Canning continue to assist WRRRA with voicing concern about aircraft noise issues, particularly with number of successive nights, followed by morning aircraft departures. During October and November, Wilson residents endured separate runs of 4, 5, 6, 7 and 9 successive over night and early mornings with aircraft departures. There was no more two successive nights for people in other flight path areas.

The City of Canning has raised this matter with the Perth Airport Municipal Group (PAMG) and will continue to seek a review of the 2015 Perth Airport Noise Abatement Plan by Air Services Australia (ASA).

The Jandakot Civil Aviation Community Group has invited WRRRA to attend meetings.

Rob Marshall

PARKING AND TRAFFIC ISSUES

With summer here there is more activity around our beautiful suburb which brings more vehicles to the area.

The picture below shows cars parked on both sides of Surrey Road at a time when Lo Quay is busy. This creates a hazardous and potentially dangerous stretch of road for residents entering and leaving the area.

You may consider a zebra crossing for pedestrians at Lo Quay, or parking restrictions on streets where overflow parking creates a nuisance. It has been suggested an approach of collecting evidence (such as photographs) and creating a petition is the best way to enable our councillors to convince the council that it is an issue that needs attention.

Over time WRRRA may create petitions on matters such as this for our members to make their voice heard.

If you are having issues with parking or traffic contact the WRRRA.



CASTLEDARE TO SURREY ROAD DUAL USE PATH & BOARDWALK

The Dual Use Path on the southern side on the Canning River Regional Park from Riverton Bridge to Kent St Weir, passing through Riverton, Ferndale and Cannington was constructed some time ago, and is being actively used by pedestrians and cyclists. NOW is the perfect time to work with the City of Canning, State Government agencies and other stakeholders to complete the Dual Use Path network on the northern side of the Canning River Regional Park, through Wilson, to connect Riverton Bridge to Fern Road via Castledare and the Surrey Road Saltmarsh, as well as the connection from Shelley Bridge to Waterford, via Centenary Park .

For many years WRRRA and the local community has supported the concept of enabling public access to this beautiful part of our suburb in an environmentally appropriate way. WRRRA published an article in our newsletter in October 2005 (http://wrra.org.au/newsletters/Oct2005_Page3_Colour.pdf), and nearby residents were invited to comment on preferred options in 2011, however, we still haven't seen much progress.

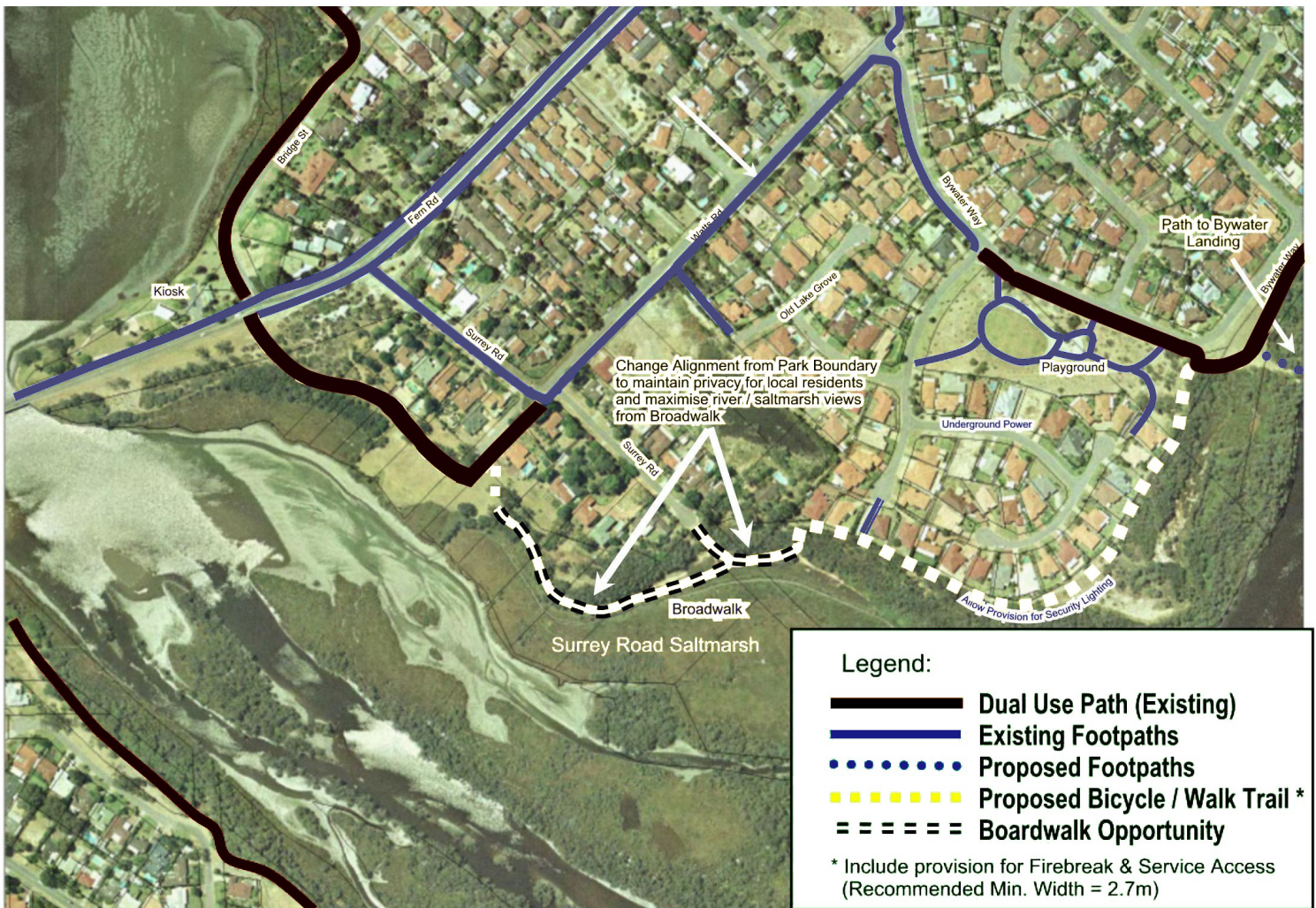
In consideration of the inaction since then, WRRRA will be actively lobbying the City of Canning to revisit and support the construction of the dual use pathway concept from the perspectives of:

- Completion of the Dual Use Path network around the entire boundary of the Canning River Regional Park.
- The connection from Shelley Bridge to Waterford, alongside the river, via Centenary Park.
- Allowing public access in a sustainable and appropriate manner, including the provision of boardwalks, where appropriate, to safeguard environmentally sensitive areas.
- Considering public safety by redirecting cyclists and pedestrians away from streets.
- The need to bring all stakeholders to the negotiation process

Residents of Wilson can help us to achieve the best outcome by:

- Supporting WRRRA's position by joining our organization. See the WRRRA Website (www.wrra.org.au) for further details.
- Speaking to your City of Canning Ward Councillor, or the new mayor (Patrick Hall)
- Speaking to the City of Canning directly

Deanne Dymock



Riverton Bridge Pharmacy

Phone : 9457 2195

118c BARBICAN STREET, EAST SHELLEY

MONDAY TO FRIDAY 8:30am - 6:00pm

SATURDAYS 8:30am - 1:00pm

WE DELIVER



Tim's Ice Creams

0404 096 333



Professional & Personal Accounting Services

Specialising in
Taxation
Management Accounting
Financial Accounting
Self-Managed Super Funds

AVAILABLE AFTER HOURS OR
WE CAN COME TO YOU



www.lmraccountants.com.au info@lmraccountants.com.au
PH: 0418 945 997

BEN WYATT MLA

Member for Victoria Park

Electorate Office:

2/896 Albany Hwy .

East Victoria Park WA 6101

Ph. 08 9361 1777 Fax 08 9470 2875

Email: victoriapark@mp.wa.gov.au



NEW MEMBERS ARE MOST WELCOME !!!

WRRRA Membership Subscription Form 2019/20

Join (or renew) your subscription via the New WRRRA Members' Portal
<http://wrrra.org.au>. See Page 2 for further instructions.

Alternatively, provide the following details and enclose \$15 for 3 years membership.

NAME.....
ADDRESS.....
E-MAIL..... (REQUIRED FOR PORTAL ACCESS)
PHONE..... (OPTIONAL)

[] Please contact me to discuss WRRRA Committee Nomination
Post form to WRRRA Treasurer, 54 Queens Park Road, Wilson WA 6107
with Cheque made out to "Wilson Residents and Ratepayers Association"

You can also deposit the form in the WRRRA Box at the Eureka One Stop Deli.
[Cash Payments are NOT recommended for Security Reasons]