



Wilson Residents and Ratepayers' Association

Website: <http://wrra.iinet.net.au>

E-Mail: wrra@iinet.net.au

Send all correspondence to: Secretary, 170 Watts Road, Wilson WA 6107

Spring Edition 2005

WRRRA represents you in Wilson by working co-operatively with:

- City of Canning
- Mason Ward Councillors
- Canning River Regional Park Community Advisory Committee
- WA Government Depts.
- Neighbourhood Watch & WA Police
- State & Federal Government Politicians
- Wilson Wetlands Action Group Inc. and other community groups
- Community Newspapers

The WRRRA Committee meets in the Wilson Community Hall on the 1st Monday of every 2nd Month (on odd-numbered months)

The next meeting will be held on 7 November 2005 @ 7:30pm.

Members are invited to attend Committee meetings.

NOT HAPPY, ALANNAH !

The proposed changes to the City of Canning's Town Planning Scheme to down-code portions of South Wilson to R17.5 / R20 (from R17.5 / R25) was recently rejected outright by the Planning and Infrastructure Minister, Alannah MacTiernan.

The association is extremely disappointed with the Ministers' decision, particularly given the extensive analysis undertaken by the City Planners and the overwhelming community support for the proposal. i.e. 62% of all respondents to the original survey supported the proposed amendments, incl. 80% of respondents in Precinct 1 (Canning River Gardens area) and 73% of respondents in Precinct 7 (Near Kent Street Weir). The proposal was also unanimously supported by the City Councillors.

Reasons given by the minister for rejecting the proposed amendment were "too much emphasis was placed

on the household survey" and "insufficient consideration was given (by the City) of strategic planning".

The WRRRA Committee wrote to Premier Gallop on August 22 seeking a full explanation of this decision. An extract of our letter to the Premier is published on Page 2 of this Newsletter.

A Special General Meeting will be held at 7:30pm on MON 7-Nov-05 to further discuss this issue with representatives from the Department of Planning & Infrastructure (DPI) and City Officials. **All Members are urged to attend this important meeting.**

On a brighter note, after many years of lobbying City and CALM officials to complete the construction of the Dual-Use Path from Riverton Bridge to Castledare, CALM recently called for public submissions to proposed changes to the Canning River Regional Park (CRRP) Management Plan to accommodate the Dual-Use Path. .../2

Inside this issue:

Editorial	1
Special Meeting Notice	1
Letter to Dr Gallop (re: Down-coding)	2
Neighbourhood Watch Update	2
CRRP Path Update	3
Membership Form	4

*** SPECIAL MEETING NOTICE ***

The WRRRA Executive Committee urges all members to attend a **Special General Meeting** on **Monday, 7th November 2005 at 7:30pm** at **Wilson Community Hall Braibrise Road**

The purpose of this meeting is seek a better explanation from DPI as to why the Council's proposal for the South Wilson Downcoding amendment was rejected by the Department and/or the Minister.

New Members can register at the door (\$5 per Household)

LETTER TO DR GALLOP

Dear Geoff,

With reference to your letter of 12 July 2005 and response from the Minister for Planning and Infrastructure, Ms Alannah MacTiernan MLA, Reference 2-2098, we are extremely disappointed at the apparent off-handed rejection by this Department of the City of Canning's Town Planning Amendment No 129.

The amendment, which was unanimously supported by the City of Canning's councillors, was in direct response to complaints from long-term residents in recent years regarding their concerns at the (negative) impact relating to the noticeable increase in group housing and infill developments in the area. It relates to a small section of Wilson abutting the Canning River Regional Park.

This issue is compounded by the total absence of any initiative by the State Government to improve existing public transport and basic community facilities in the area. i.e. All primary schools, community shops, medical facilities and sporting amenities in Wilson are all located on the northern side of Leach Highway and no such facilities are located within walking distance of the area

covered by the proposed amendment.

It's important to note that the City's recommendation to change the zoning from R17.5 / R25 to R17.5 / R20 was accompanied by a detailed impact assessment and the results of a comprehensive household survey, conducted at the association's request, which clearly shows that the majority of ratepayers within the nominated areas supported the proposed amendment.

To reject our City's Application on the grounds "that Council has placed too much emphasis on the results of a household survey and not adequately demonstrated strategic planning grounds" is seen to be extremely dismissive by the association (given the detailed impact assessment and community consultation undertaken by the City Planners as part of the amendment process); and an insult to the ratepayers that participated in the survey!

... It's clear that the City has indeed made significant provision for high-to-medium density developments north of the Canning River.

From the association's perspective, All we're asking for (on behalf of

South Wilson residents) is a "fairer" distribution of group housing and infill developments within the Wilson area, particularly given that majority of Wilson residents north of Leach Highway have consistently supported such developments while Wilson residents south of Leach Highway have traditionally opposed them.

In light of these concerns and the off-handed / insensitivity single paragraph refusal of the proposed application, we intend to convene a Special Meeting of the Wilson Residents and Ratepayers' Association to discuss this matter jointly with the local councillors, City officials and members of your Government.

We therefore ask that either the Minister for Planning and Development and/or yourself, as our Local State Government Representative, attend this meeting to clearly explain the reasons for the Minister's refusal of City of Canning's Town Planning Amendment No 129.

Yours sincerely,

Max Zeller

WRRRA President

NHW UPDATE

Neighbourhood Watch WAonline (www.nhw.wa.gov.au) is an exciting new development in community policing in WA.

All residents are encouraged to visit the new website to receive regular emails from your local police about crime prevention issues affecting our suburb.

If we want to make our community safe and drive crime down, police can't do that without your support.

By Maria Valli

Continued from first page ...

A map showing WRRRA's preferred route for the proposed extension of the CRRP Dual-Use Path Network from Riverton Bridge to Castledare is shown on the next page.

Max Zeller
WRRRA President

E-Mail: max@wrra.iinet.net.au



Come and help the Wetlands

Contact Russell Gorton
for further details

Ph: 9258 7301

E-Mail: wwag@iinet.net.au

[Community Notice]

WRRRA'S PREFERRED ROUTE FOR DUAL-USE PATH

WRRRA is actively lobbying CALM and the City officials to ensure the timely construction of the remaining section of the Dual-Use Path Network around the Canning River Regional Park from Riverton Bridge to Castledare.

CALM recently called for Public Submissions for proposed amendments to the Canning River Regional Park to enable the existing footpath to be upgraded to Dual Use Path standards.

In its submission to CALM, the WRRRA Committee emphasised the following points:

1. We echoed the concern expressed by Surrey Road and Watts Road residents regarding the safety of the

Dual-use Path should it be constructed along Surrey Road.

2. We expressed concerns over the CALM's proposed alignment of the path along the Park Boundary. We feel it would unnecessarily rob users of the beautiful vistas of the Canning River and the Surrey Road Saltmarsh (and invade the privacy of local residents)
3. We proposed the construction of a Boardwalk along an alternative route within the Park Boundary (similar to structures within the CRRP in the Ferndale Flats area).

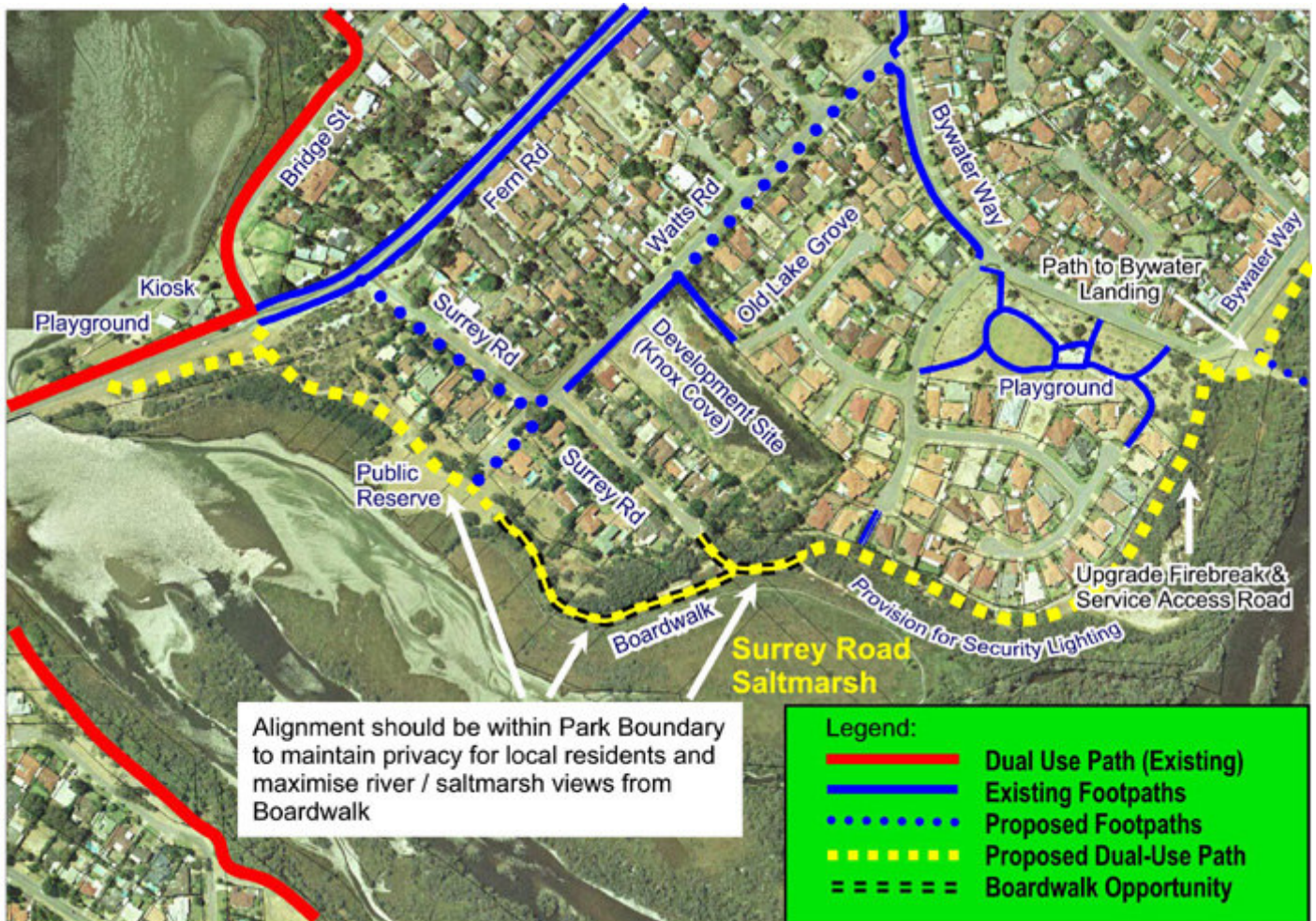
Refer to the map below for further details.

WRRRA's proposal is consistent with the City of Canning's position on this issue.

i.e. We support the City's proposal to extend the path to Bywater Way along the existing firebreak at the back of the Canning River Gardens Estate, and eventually through to Castledare, as was planned when this estate was first developed.

Members are encouraged to contact the association on wrra@iinet.net.au or 9258 9250 if they have any related questions (or concerns).

By Geoff Rees



PLEASE SUPPORT OUR ADVERTISERS

We need volunteers to help distribute this newsletter.

Ring Max on 9258 9250 or E-Mail Us at wrra@iinet.net.au if you can spare a few hours (twice a year), particularly if you live North of Leach Highway.

Riverton Bridge Pharmacy

Phone/ Fax: 9457 2195
118c BARBICAN ST, EAST SHELLEY

OPEN MONDAY TO FRIDAY 8:30 AM - 6:00 PM
SATURDAYS 8:30 AM TO 1:00 PM

WE DELIVER

MORGAN

Real Estate

**SELLING
RENTING**

**NOT BEEN REFERRED TO US?
ASK AROUND YOU SOON WILL BE!**

9457 0500

DISCOUNTS WITH A COPY OF THIS AD

GEOFF GALLOP *MLA*
Member for Victoria Park

Electorate Office:
Shop 2, 896 Albany Highway,
East Victoria Park WA 6101

Ph: 9361 1777 Fax: 9470 2875

Email: ggallop@mp.wa.gov.au



Peta Charles
Hair Studio
Men & Women

Tel 9458 2440
Mobile 0427 989 247

Shop 4B / 32 Dumond Street
Bentley WA 6102



TUE-FRI 9-5pm
WED Late
SAT 8:30-2pm

Eureka One Stop

SUPERMARKET, DELI
LOTTO AGENCY, NEWSPAPERS
FRESH FLOWERS, ICE ...

10 Eureka Road, Wilson
Phone: 9451 3080



Interested in Advertising in this Newsletter? Please ring Max on 9258 9250 or E-Mail wrra@iinet.net.au for further details.

NEW MEMBERS ARE MOST WELCOME !!!

Remember, the more members we have, the more power the Association has to lobby the City of Canning and State Government Departments to improve services within Wilson.

WRRRA Membership Subscription Form

To join the Association, simply complete the following details, enclose your Annual Membership Fee of \$5 per Household and return it to us (as per the instructions below). Receipts will be issued upon request.

NAME(S).....

ADDRESS.....

PHONE.....E-MAIL.....

Post form to WRRRA, 12 Foreshore Entrance Wilson 6107 OR drop it in the WRRRA Box at the Eureka One Stop Deli (on Eureka Road). Please do not enclose cash payments. Mark Cheques payable to the "Wilson Residents and Ratepayers' Association".

Payments will also be accepted at the WRRRA Special General Meeting.